

SmartZone™ Rack Energy Kits EMEA

Simple Add-On Intelligence for Small Data Centres

Realise the benefits of DCIM with Panduit SmartZone™ Rack Energy Kits - specifically designed to provide cost-effective power and environmental monitoring for small data centre environments with 30 or fewer racks and cabinets.

Success in 3 simple steps...

STEP 1:
ORDER

SIMPLE TO ORDER

- Packaged with all necessary hardware and software for per/rack deployments under **one simple orderable part number**.



STEP 2:
INSTALL

SIMPLE TO INSTALL

- Install with **little to no downtime** incurred
- **Adapt existing installed “non-intelligent” devices into intelligent ones**
- Utilise **minimal space** (max of 1-2 RU) per rack
- Require a **single IP address** per rack for multiple connected devices (gateways, PDUs, and sensors)



STEP 3:
MONITOR

SIMPLE TO USE

- Utilise simple, yet **intuitive GUI display**
- Provide live and historical **views of monitored power, and environmental data** readings
- **Identify possible service issues** and sends alert notifications
- **Document** operational data for report creation

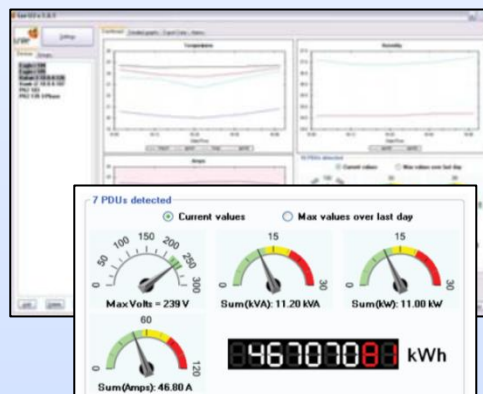


ROI

SIMPLE ROI PAYBACK

Arming users with accurate and actionable information, Rack Energy Kits help customers to:

- Optimise operational efficiencies
- Reduce OpEx costs
- Increase data centre resiliency



INCLUDED IN THE BOX

- SmartZone™ Rack Monitoring Software
- SmartZone™ Gateway EP042
- SmartZone™ Power Monitoring Device(s)
 - Four different kit options (defined on other side of page)
- Two Temperature Sensors
- Set of Ethernet Cables



Is the customer looking to add intelligence to an existing data centre or building intelligence into a new one?



WHICH KIT TO SELECT?

SmartZone™ Rack Energy Kit solutions simplify installation and support multiple approaches to monitoring and capturing of operational data through different kit options that include:

Legacy (Brownfield) Retro-fits



Add Intelligence to an Existing DC

Turn existing “dumb” devices into intelligent ones

- **Install** the non-invasive SmartZone™ Clamp Meter over a device’s operating power cable to begin monitoring its current without any downtime. OR...
- **Install** a SmartZone™ Inline Meter between a dumb PDU and a power source to add aggregate power monitoring to a PDU.
- **Monitor, manage, and document** power and environmental conditions thru SmartZone™ Gateway and connected SmartZone™ Rack Monitoring Software.

New (Greenfield) Expansions



Build Intelligence into a New DC

Add scalable intelligence at the outset to a new data centre

- **Install** SmartZone™ Rack PDUs to support power monitoring of installed equipment i.e. servers, disk storage arrays, blade server enclosures and network switches.
- **Monitor, manage, and document** power and environmental conditions thru SmartZone™ Gateway and connected SmartZone™ Rack Monitoring Software.

Brownfield

Greenfield

SmartZone™ Rack Energy Kit w/ Clamp Meter



Includes two non-invasive SmartZone™ Clamp Meter devices, which can be easily and “non-invasively” placed directly over operational power cables (up to 30 Amps) to enable power monitoring without power downtime.

SmartZone™ Rack Energy Kit w/ Zero-RU Inline Meter



Includes two SmartZone™ Zero-RU Inline Meters that can add aggregate power intelligence to existing “dumb” power distribution units (PDUs).

SmartZone™ Rack Energy Kit w/ 1RU Inline Meter



Includes a rack-mounted SmartZone™ 1RU Inline Meter that overlays intelligent monitoring capabilities to two non-intelligent PDUs installed in a rack or cabinet.

SmartZone™ Rack Energy Kit with Rack PDU



Includes two SmartZone™ Rack PDUs that enables per outlet power monitoring of installed equipment such as servers, disk storage arrays, blade server enclosures and switches.

HOW DO THE KIT COMPONENTS WORK TOGETHER?

SmartZone™ Rack Energy Kits utilise a unique and cost-effective infrastructure topology that uses a SmartZone™ Gateway to supply monitoring intelligence and power to connected SmartZone™ Power Monitoring Devices and Sensors. This simplifies the network architecture by consolidating the monitoring and management, of these devices through one single IP address. This information can then be displayed via the SmartZone™ Rack Monitoring Software platform for monitoring and display, management, and documentation of operational metrics.

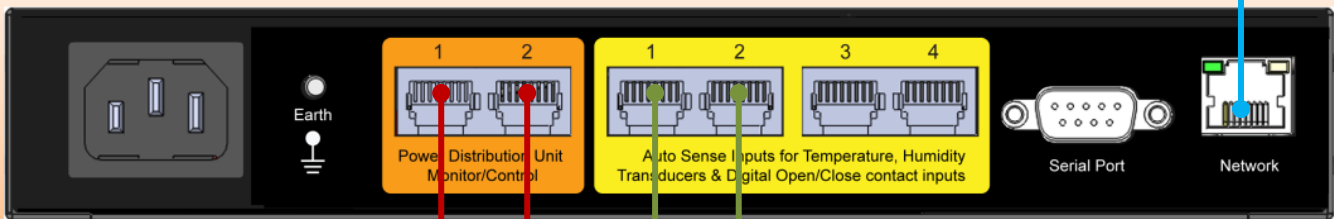
Monitor, Display, and Document Data

INCLUDED: SmartZone™ Rack Monitoring Software



IP LAN Connection

Process and Consolidate Data



INCLUDED: SmartZone™ EP Series Gateway (back view)

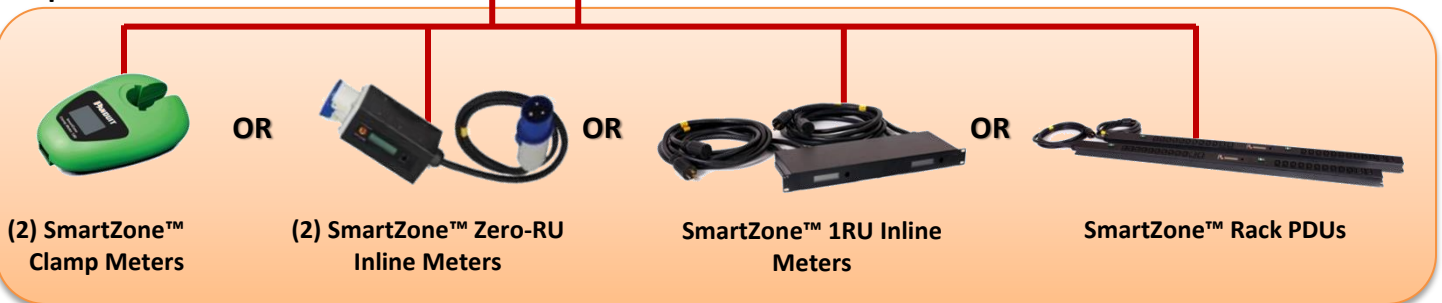
Up to (2) Rack Energy Kit power devices connect to the SmartZone™ EP Series Gateway thru RJ45 ports

SmartZone™ EP Series Gateway provides (4) RJ45 ports to connect various sensor devices

(CHOICE OF) INCLUDED: SmartZone™ Power Monitoring Devices (varied by kit) that connect to these RJ45 ports include

◀ **INCLUDED:** (2) SmartZone™ Temperature Sensors and patch cords. *NOTE: This leaves (2) open ports for later expansion*

Capture Data



What are the Orderable Part Numbers?

SmartZone™ Rack Energy Kit w/ Clamp Meter

RMSC2T2PCLA01 Rack Energy Kit: Standard Kit plus (2) Clamp Meters

SmartZone™ Rack Energy Kit w/ Zero-RU Inline Meter

RMSQ2T2POB201E Rack Energy Kit 201: Standard Kit plus (2) 0-RU Inline Meters 16A Single Phase IEC 60309 Commando Plugs & Sockets

RMSQ2T2POB202E Rack Energy Kit 202: Standard Kit plus (2) 0-RU Inline Meters 16A Three Phase IEC 60309 Commando Plugs & Sockets

RMSQ2T2POB203E Rack Energy Kit 203: Standard Kit plus (2) 0-RU Inline Meters 32A Single Phase IEC 60309 Commando Plugs & Sockets

RMSQ2T2POB204E Rack Energy Kit 204: Standard Kit plus (2) 0-RU Inline Meters 32A Three Phase IEC 60309 Commando Plugs & Sockets

SmartZone™ Rack Energy Kit w/ 1RU Inline Meter

RMSL2T1POB205E Rack Energy EMEA Kit 205: Standard Kit plus (1) 1RU Inline Meter 16A Single Phase IEC 60309 Commando Plugs and Sockets

RMSL2T1POB206E Rack Energy EMEA Kit 206: Standard Kit plus (1) 1RU Inline Meter 16A Three Phase IEC 60309 Commando Plugs and Sockets

RMSL2T1POB207E Rack Energy EMEA Kit 207: Standard Kit plus (1) 1RU Inline Meter 32A Single Phase IEC 60309 Commando Plugs and Sockets

RMSL2T1POB208E Rack Energy EMEA Kit 208: Standard Kit plus (1) 1RU Inline Meter 32A Three Phase IEC 60309 Commando Plugs and Sockets

SmartZone™ Rack Energy Kit with Rack PDU

RMSP2T2POB209E Rack Energy EMEA Kit 209: Standard Kit plus 2 x 16A Single Phase 21xC13, 3xC19 Monitor Only. Input: IEC 60309 Commando Plug, SmartZone™ M Series PDU - **Monitor only**

RMSP2T2POB210E Rack Energy EMEA Kit 210: Standard Kit plus 2 x 32A Single Phase 21xC13, 3xC19 Monitor Only. Input: IEC 60309 Commando Plug, SmartZone™ M Series PDU - **Monitor only**

RMSP2T2POB211E Rack Energy EMEA Kit 211: Standard Kit plus 2 x 32A Single Phase 21xC13, 3xC19 Monitor & Control. Input: IEC 60309 Commando Plug, SmartZone™ MS Series PDU - **Monitor w/Switch controls**

RMSP2T2POB212E Rack Energy EMEA Kit 212: Standard Kit plus 2 x 32A Single Phase 21xC13, 3xC19 Per Outlet Monitor & Control. Input: IEC 60309 Commando Plug, SmartZone™ MSPO Series PDU – **Monitor per outlet w/Switch Controls**

RMSP2T2POB213E Rack Energy EMEA Kit 213: Standard Kit plus 2 x 32A Three Phase 24xC13, 6xC19 Monitor Only. Input: IEC 60309 Commando Plug, SmartZone™ M Series PDU - **Monitor only**