

DELLTechnologies

Dell Pro Laptops and Desktops

Designed for professional-grade productivity



For every professional need, there's a Dell Pro.

The new standard in AI PCs and devices that deliver enhanced productivity, management, security, and sustainability



| | |
|--------------------------------|--------|
| Dynamic business landscape | 3 |
| Copilot+ PCs: Performance & AI | 4 |
| Windows 11 on Dell Pro AI PCs | 5 |
| Dell Pro Laptops | 6 - 10 |
| Sustainable Innovation | 11 |

| | |
|----------------------------------|---------|
| Dell Pro Desktops | 12 - 17 |
| Reimagining desktops sustainably | 18 |
| AI-level productivity | 19 |
| Simplify IT | 20 |
| Benefits: Why Insight for Dell? | 21 |

Dynamic business landscape

Technological innovation, increasing cyberthreats, and satisfying your employees are only some of the critical considerations modern businesses must make when choosing the right IT partners and computing solutions.



Turn end of support into a new beginning with Dell & Windows 11

Make the switch and maximise benefits

- Windows 10 PCs* no longer receive security updates, new feature updates and Windows 10 technical support.
- Older devices may not meet Windows 11 requirements, face compatibility issues and lack the latest built-in performance, security, and AI enhancements.

Step into the future now with advanced AI capabilities and powerful new features that drive success.

76%

of IT and business leaders believe GenAI will deliver transformative value for their organisation¹

95%

of end-users are interested in peripherals that could substantially augment GenAI processing power²

98%

of PCs on the market will be AI PCs by 2028³

76%

of ITDMs said employees with AI PCs will outperform those without AI PCs⁴

* Excluding PCs where an ESU has been purchased.

¹ Innovation Catalyst study, Dell Technologies, February 2024

² A commissioned study conducted by Forrester Consulting on behalf of Dell, Nov 2024.

³ IDC Worldwide AI-Enabled PC Forecast, 2024–2028: 2Q24

⁴ A study by Forrester, Dell Latitude Thought Leadership Study (<https://www.delltechnologies.com/asset/en-us/products/laptops-and2-in-1s/briefs-summaries/dell-latitude-ai-pc-infographic.pdf>).external Sarah Brinks and Andrew Hewitt, survey of 205 IT managers responsible for AI PC strategies in North America, Feb. 2024.

The Windows Performance Lab: Powering Trust Through Data

In the new era of Copilot+ PCs, performance and AI are inseparable.

Microsoft know that innovation without verification is just a claim. That's why they established the Windows Performance Lab. Through the Windows Performance Lab, they provide the entire ecosystem—from silicon partners to retailers—with a transparent methodology and the latest performance insights. This commitment ensures that the category of Copilot+ PCs is defined by accuracy and technical excellence. [Find out more.](#)



Copilot+ PCs

are up to

5x faster

than an average

5-year-old
Windows PC

Copilot+ PCs

are up to

2x faster

in Office productivity

tasks than an average
5-year-old Windows PC

Copilot+ PCs

are up to

3.7x faster

in AI performance than

an average previous
generation Windows 11 PC

Copilot+ PCs

now delivers up to

19 hours

of web browsing battery life

Top performing

Copilot+ PCs

outperform

the MacBook Air® M4™

 **Insight.**

 **Dell** Technologies

Thrive and succeed with Windows 11 on Dell Pro AI PCs



New Dell AI PCs can help boost productivity, security and efficiency in your organisation.

Find the ideal PC for you:

AI PCs: Ideal for entry-level AI tasks and AI app acceleration
Copilot+ PCs: High-performance, on-device capabilities.

Make the right investment:

The [AI PC Calculator](#) is your go-to tool for making informed decisions about investing in AI-enabled equipment.

Improved security

Security capabilities with combined protection from Dell and Windows 11.

3x reported reduction in firmware attacks with Windows 11 Pro devices¹

Elevated productivity

AI performance and the latest monitors and accessories for a complete Dell Desk Solution.

70% of Microsoft 365 Copilot users surveyed said they were more productive²

Easy to manage your fleet

Dell Solutions make transition and deployment seamless, reducing complexity for IT.

25% faster deployment reported with Windows 11 Pro devices²

¹ Windows 11 Survey Report, Techaisle, September 2024. Microsoft commissioned report where results are in comparison with Windows 10 devices.

² Microsoft commissioned study by Forrester Consulting The Total Economic Impact™ of Windows 11 Pro Devices, December 2022. Note, quantified benefits reflect results over three years combined into a single composite organization that generates \$1 billion in annual revenue, has 2,000 employees, refreshes hardware on a four-year cycle, and migrates the entirety of its workforce to Windows 11 devices.

Meet the new Dell Pro laptop portfolio



Dell Pro

With modern and durable designs, Dell Pro laptops offer optimised performance for essential business productivity.



Dell Pro Plus

Crafted with a sleek and durable design, Dell Pro Plus laptops are our most scalable commercial laptops.¹



Dell Pro Premium

Enjoy a premium design and experiences wherever you work on the lightest, slimmest, and quietest laptops in the Dell Pro family.²

1. Based on Dell internal analysis, November 2024.

2. Based on Dell internal testing, November 2024.

Confidently work anywhere with the Dell Pro family of laptops



Mobile designs

Small and light devices for at-the-desk productivity or on-the-go versatility.

Variety of premium upgrades

Options for Collaboration Touchpads, Zero-Lattice Keyboards, Mini-LED Battery-Saving Backlit Technology, up to 8MP IR cameras with HDR technology, and more.

AI PC options

Enjoy exceptional battery life and performance, as well as powerful on-device AI, with the latest Intel® Core™ Ultra Series 2 processors and up to AMD Ryzen™ AI PRO 300 Series processors.

Seamless connectivity

Opt for a WiFi 7 capable wireless card⁴ for faster, more reliable connectivity, and access the Internet wherever you work with optional mobile broadband.⁵

Delight your end user

Purposefully built to deliver outstanding experiences for commercial users with larger 16:10 aspect ratio displays¹, roomy touchpads for ample space to navigate, sleek narrow borders, and metal chassis options.

1. A 16:10 aspect ratio display features 5% more screen real estate vs. a 16:9 aspect ratio display on the 13" and 14" notebooks and 10% more on the 16" notebooks.

2. Based on Dell internal analysis, October 2024 (Intel) and March 2025 (AMD). Applicable to PCs on Intel and AMD processors. Not all features available with all PCs. Additional purchase required for some features. Validated by Principled Technologies. [A Comparison of Security Features](#), April 2024.

3. Most-manageable commercial PCs when comparing the systems management capabilities of Dell Update Processes, Dell Manageability Solution capabilities and integrations with 3rd Party Management Solutions, with competitor update processes, systems management solution capabilities and integrations with 3rd party management solutions. 3rd Party Management Solutions - Microsoft Intune, Workspace ONE, are separate purchases. Intel vPro, to support out-of-band systems management, is an additional system configuration upgrade.

Scalable and flexible form factors

Select from laptop, or 2-in-1 form factors with sizes ranging from 13" to 16".

World's most secure commercial AI PCs²

Powerful security built-in with Dell SafeID, Dell SafeBIOS, lock slots, and smartcard reader options.

Most manageable commercial PCs³

Help your IT Admins save time, money, and resources when managing a fleet of PCs.

Sustainable innovation

Intentionally designed to lower environmental impact with low-impact packaging, innovation with sustainable materials, responsible IT asset retirement, and environmental certifications and registrations that demonstrate our commitment to climate-related and energy-efficiency standards.

Accessories designed and tested to work better together

Dell has all the tools to build your perfect setup anywhere - including keyboards, mice, docks, webcams, audio solutions and more.

4. WiFi7/6e which has the 6GHz band requires Windows 11 Operating system and compatible router. Router requires a separate purchase. WiFi 7/6E (6GHz) connectivity is only available in select locations. Check availability with your service provider. The WiFi 7 card will operate on WiFi 6E/6 speeds when WiFi 7 is unavailable. Drivers for WiFi 7 will be available mid-2024 (Win11 24H2 update). Dates are subject to change without notice. Ubuntu OS will not support WiFi7 and will operate on WiFi 6/6E speeds when configured for WiFi7. The Bluetooth wireless card version may vary depending on the operating system that is installed on your computer.

5. Mobile Broadband antenna and module (for 2-in-1 devices) available only at time of system purchase. Mobile Broadband subject to service provider's broadband subscription and coverage area; additional charges apply. eSim technology subject to regional carrier/service provider availability & service provider's data plan subscription; additional charges apply. Check availability with your service provider.

Dell Pro Premium Laptops

Our ultimate in commercial mobility and design.



Ultimate mobility

Crafted from elegant yet durable 90% recycled magnesium,¹ Dell Pro Premium laptops are the lightest and slimmest 13.3" and 14" laptops in the Dell Pro laptop family.² With a new dual-fan thermal system that increases airflow by 20%,² Dell Pro Premium laptops are also our quietest laptops, running whisper quiet wherever your work takes you.



World's most advanced display in a commercial laptop⁵

Bring your work to life with rich colours against a true black background. Available later this year on the 14", opt for a Tandem OLED display that is 24% more power efficient and 49% lighter than traditional rigid OLED displays.²



World's most premium commercial laptop³

The Dell Pro Premium will delight your end users as the world's only premium commercial laptop⁴ to offer:

- Standard 8MP IR camera with HDR technology
- Optional Collaboration Touchpad
- Zero-Lattice Keyboard
- Optional Battery-Saving Mini-LED Backlit Technology



Up to 21.2 hours of battery life on the 14" with FHD+⁶

Harness powerful on-device AI and outstanding performance and power efficiency on this AI PC, featuring Copilot+ PC experiences⁷ and Intel® Core™ Ultra 200V series processors.

1. Based on Dell internal analysis, November 2024.

2. Based on Dell internal testing, November 2024.

3. Applies to Windows-based laptops only and is based on Dell analysis of publicly available information, November 2024.

4. Based on Dell analysis of publicly available information, November 2024.

5. Based on confirmation from Tandem OLED panel vendor (LG Display USA), Nov 2024.

6. Battery life up to 21 hours and 10 minutes of battery life with Intel U5-236V, 16GB RAM, 256GB PCIe SSD, FHD Non-Touch 400nits Display, Windows 11, and 60 Whr battery. Based on testing using the Mobile Mark 2025 battery life benchmark test in December 2024.

For more information about this benchmark test, visit www.bapco.com. Actual battery life may be significantly less than the test results and varies depending on product configuration and use, software, usage, operating conditions, power management settings and other factors. Maximum battery life will decrease with time.

7. Copilot+ PC experiences require free updates. Timing varies by device and region. See aka.ms/copilotpluspcs.

Dell Pro Plus Laptops

Our most scalable performance in a durable and sleek design.



World's most scalable mainstream business laptop¹

Dell Pro Plus features a variety of configurations to fit the needs of your workforce - all with the same system BIOS for simplified management and deployment.

- Select from 13.3", 14.0" or 16.0" sizes
- Laptop or 2-in-1 (16" only available in laptop form factor)
- Range of options including processor, display, memory, storage, camera, wireless cards, mobile broadband and more.



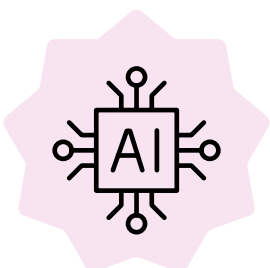
Most comprehensive security solution of any mainstream business laptop¹

Enjoy the security to work from anywhere with options for a contactless smart card reader, TPM, Control Vault 3+, fingerprint reader in the power button, wedge lock slot, privacy shutter, Windows Hello-enabled IR camera, and User Presence Detection.



Bold design

Crafted from 50% recycled aluminium, our mobile and space-saving designs are both durable and sleek. With an improved thermal solution that is up to 30% quieter than the previous generation,² you'll get enjoy the performance you need, wherever you work, without added fan noise. Enjoy more room for productivity on a spacious 16:10 aspect ratio display, and plenty of space for nimble navigation on a touchpad that is 15%-42% larger than the previous generation.³



Latest AI PC options

AI PCs offer outstanding performance, long-lasting battery life, and on-device AI. Select an AI PC with the capabilities that work best for your organisation's needs with options powered by either Intel® Core™ Ultra Series 2 processors or up to AMD Ryzen™ AI PRO 300 Series processors. Available on select processors, Copilot+ PCs offer turbocharged NPUs and unique AI experiences.

1. Based on Dell analysis of publicly available information, November 2024.

2. Based on Dell internal testing, November 2024. The claim applies for Dell Pro Plus configurations with Intel® Core™ Ultra 200U series processors or Intel® Core™ processors.

3. Based on Dell internal testing, November 2024.

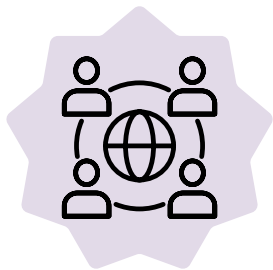
Dell Pro Laptops

Essential productivity in a modern and durable design



Enhanced performance for modern professionals

The Dell Pro is engineered for productivity, featuring the latest Intel® Core™ and AMD Ryzen™ processors, with options to upgrade for ultimate scalability. The expansive 16:10 display with narrow bezels and up to 10% larger screen¹ enhances productivity, delivering crisp, detailed visuals. Whether you're managing large datasets or working on creative projects, the Dell Pro ensures smooth and efficient performance at every step.



Advanced connectivity and collaboration

Equipped with an FHD IR camera powered by HDR technology, the Dell Pro ensures you look sharp on every video call, while dual mics and speakers deliver clear audio for seamless collaboration. Plus, with WiFi 6, 6E, and WiFi 7² options, you'll enjoy blazing-fast connectivity wherever you go.



Modern design meets world-class durability

Crafted with premium materials, the Dell Pro offers two sophisticated chassis options—platinum silver with a metallic finish or magnetite with a laser-textured exterior. Rugged yet elegant, this laptop withstands rigorous military standard testing to ensure durability no matter where your work takes you. It's a perfect blend of luxury and reliability for on-the-go professionals.



Sustainable design

Designed with the planet in mind, the Dell Pro incorporates sustainable materials like up to 30% post-consumer recycled content in its chassis and recycled cobalt in its battery³. This environmentally-conscious design meets top energy efficiency and climate impact standards⁴, offering a greener computing experience. Innovatively, it's also the world's first commercial PC with modular USB-C ports⁵, making repairs easier while extending the device's lifecycle.

1. Dell Pro 16 has 10% greater screen area than the predecessor (Latitude 3550), as they went from 16:9 to 16:10 aspect ratio. Based on internal analysis (Feb 2025).

2. WiFi 7: WiFi 7 certified products will roll out in accordance with the WiFi Alliance certification schedule throughout 2024. WiFi 7 requires the latest WiFi Alliance certification, Windows HLK certified device driver, hardware update, supported Windows OS version and compatible router. WiFi 7/ 6E connectivity (6 GHz) with Windows 11 is limited and will leverage prior generation of WiFi 6E/ WiFi 6 speeds until drivers are available and hardware adoption increases. Ubuntu OS will not support WiFi 7 and will operate on WiFi 6E/6 speeds when configured for WiFi 7. Router requires a separate purchase. WiFi 7/ 6E (6 GHz) connectivity is only available in select locations. Check availability with your service provider. The Bluetooth wireless card version may vary depending on the operating system that is installed on your computer.

3. Based on internal analysis, January 2025. Entry battery(45 whr) uses NCM technology and has 80% lesser cobalt compared to LCO technology.

4. Based on internal analysis, November 2024. EPEAT registered where applicable. EPEAT registration varies by country. See www.epeat.net for registration status by country.

5. Applies to Dell Pro, Dell Pro Plus, and Dell Pro Premium notebooks launching in 2025. Based on internal comparison of the solder connection on Latitude 7450 vs screwed connection testing data of the Dell Pro Premium laptop subject to a repeated standard wrenching torque in multiple directions. New USB-C port design is as screwed on connection for easier repairs and improved durability. Read warranty information for USB-C port replacement instructions.

Sustainable Innovation

Delivering innovative technology and solutions to collectively lower our environmental impact.



Built with sustainable materials



Our laptops are designed with innovative materials, including options like recycled magnesium, recycled and low emissions aluminium, post-consumer recycled plastic, bio-based rubber bumpers, recycled ocean-bound plastic or recycled glass.¹

Extending Dell's leadership in recycled cobalt, and based on the chosen configuration, Dell Pro Plus notebooks may ship with batteries made with 80% less cobalt or 50% recycled cobalt.²



Packaging with purpose

Ships in packaging with 100% recycled or renewable materials⁵ with multipack options to reduce packaging and transportation waste.⁶



Leading design for PC longevity

The Dell Pro family of notebooks are designed with modular mainboard and i/o boards to improve access to repairs, helping reduce e-waste.³ Also, 100% of the Dell Pro family of notebooks is equipped with a modular USB-C port with up to 4 times better twist resistance and up to 33 times better impact resistance, improving durability and enabling easier repairs.⁴ Dell also makes it easy to access and replace parts to get the most life out of our products.



Seamlessly transition from old to new technology

We can help you responsibly and securely retire your legacy IT equipment, regardless of brand, while addressing your sustainability goals.



Meets the latest environmental standards

These products are certified ENERGY STAR®, carry TCO certification, and are EPEAT Gold registered with Climate+ designation⁵.



1. Dell Pro Plus notebooks: Based on internal analysis, November 2024, 50% Low emissions and 50% recycled aluminum in the top cover and palmrest, up to 50% post-consumer recycled plastic in the inner frame of top and bottom covers and speaker housing and 98% post-consumer recycled plastic in the battery frame, 46% bio-based rubber bumpers, 28% recycled ocean-bound plastic in the fan housing and 10% recycled glass in the panel. Cobalt reduction in the battery (45 whr) is 80% reduced cobalt use in NCM battery technology compared with LCO battery technology. Dell Pro Premium notebooks: Based on internal analysis, November 2024. Designed with recycled materials like 90% recycled magnesium in the chassis, up to 50% post-consumer recycled plastic in the bezel frame and speaker housing, 98% post-consumer recycled plastic in the battery frame, 50% recycled cobalt in the battery and 46% bio-based rubber feet. Recycled cobalt applies to the 40Whr and 60Whr batteries. Post-consumer recycled plastic: 98% in the battery frame, 50% in the bezel and 30% in the speaker housing.

2. Based on internal analysis. Entry battery (45 whr) uses NCM technology and has 80% lesser cobalt compared to LCO technology. Upsell battery (55 whr) is made with 50% recycled cobalt.

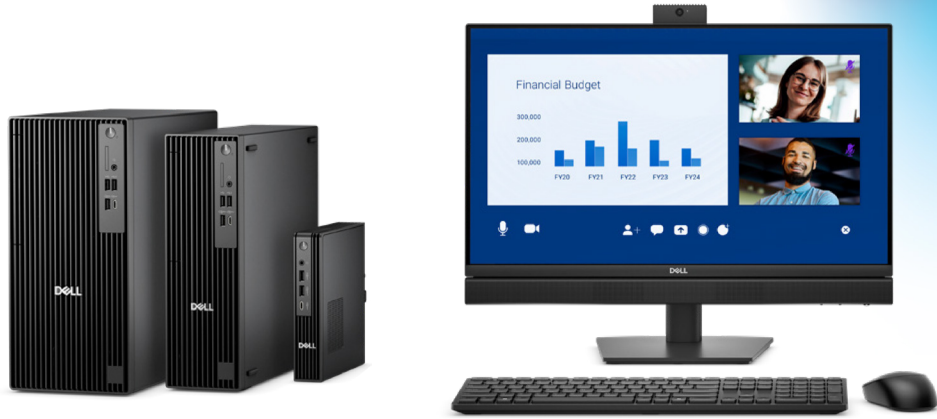
3. Applies to Dell Pro, Dell Pro Plus, and Dell Pro Premium notebooks launching in 2025. Based on internal analysis, November 2024.

4. Applies to Dell Pro, Dell Pro Plus, and Dell Pro Premium notebooks launching in 2025. Based on internal comparison of the solder connection on Latitude 7450 vs screwed connection testing data of the Dell Pro Premium laptop subject to a standard repeated axial load and a standard wrenching torque in multiple directions. New USB-C port design is as screwed on connection for easier repairs and improved durability. Read warranty information for USB-C port replacement instructions.

5. Dell Pro notebooks: Contains up to 94.1% recycled content and 6.3% renewable content in the form of sustainably forested materials. Excludes optional items added to order and included in box. Dell Pro Plus notebooks: Contains up to 93% recycled content and up to 7.2% renewable content in the form of sustainably forested materials. Excludes optional items added to order and included in box. Dell Pro Premium notebooks: Contains up to 94.3% recycled content and up to 5.9% renewable content in the form of sustainably forested materials. Excludes optional items added to order and included in box.

6. Based on internal analysis, November 2024.

Meet the new Dell Pro desktop portfolio



Elevate your business with Dell Pro desktops, the most secure¹ commercial PCs.

Featuring AI PC options with Intel® Core™ Ultra and AMD Ryzen™ processors², these professional grade desktops maximise productivity and cater to diverse business needs with a range of form factors, configurations and manageability offerings.



Dell Pro Micro Dell Pro Micro Plus

Ultracompact, to maximise business productivity in the smallest of spaces.



Dell Pro Slim Dell Pro Slim Plus

High-performance, compact desktops with optional modules for effortless upgrades.



Dell Pro Tower Dell Pro Tower Plus

Powerful, expandable and upgradable PCs, ideal for demanding workloads.



Dell Pro 24 All-in-One 35W Dell Pro 24 All-in-One 65W Dell Pro 24 All-in-One Plus

Sleek, space-saving solution that integrates a display, collaboration features and robust computing for demanding tasks.

1. Based on Dell internal analysis, October 2024 (Intel) and March 2025 (AMD). Applicable to PCs on Intel and AMD processors. Not all features available with all PCs. Additional purchase required for some features. Validated by Principled Technologies. A comparison of security features, April 2024.

2. AMD Ryzen™ processors are available on Dell Pro Micro, Dell Pro Slim and Dell Pro Tower only.

Accelerate productivity with Dell Pro desktops



Introducing AI PCs from the World's leading commercial AI PC brand¹

Unlock new levels of performance with AI PC options, powered by Intel® Core™ Ultra and AMD Ryzen™ 8000 Series processors. Equipped with a dedicated neural processing unit (NPU), these systems are designed to tackle AI workloads, helping businesses stay ahead of the game.

Configurations without built-in AI are also available.

Scalable performance

All Dell Pro desktops come equipped with DDR5 memory to tackle high performance tasks efficiently. With comprehensive configurations, connectivity and expandable options including storage, graphics, WiFi and more, they adapt to meet varying needs.

Simplify IT

Featuring the most secure² commercial PCs, along with modern lifecycle services and solutions to make IT management a breeze.

One BIOS

Simplify PC fleet management with a unified BIOS for each processor brand across Dell Pro Micro, Slim and Tower PCs³, and one across Dell Pro All-in-Ones.

Valuable IT investment

Up to two year PC refresh lifecycle for managed transitions help reduce maintenance and support costs.

Steadfast reliability

We are committed to making your IT investment count. That is why fewer than 1% of Dell Pro desktops require service within their first year⁴. Over the last decade, we've achieved a 60% reduction in quality incidents, delivering the reliable performance businesses trust⁴. Accelerate productivity with Dell Pro desktops

Sustainable innovation

Designed with sustainability in mind, these PCs feature innovation with sustainable materials, low impact packaging, responsible IT asset retirement, and environmental certifications and registrations that demonstrate our commitment to climate-related and energy-efficiency standards.

Built to last

Every Dell Pro desktop undergoes rigorous military-grade testing⁵ to deliver dependable, robust, long-lasting performance.

Accessories that work better together

Dell has all the tools to build your perfect setup - including optional mounts and stands, keyboards, mice, docks, webcams, audio solutions and more

1. Based on IDC Worldwide Quarterly Personal Computing Device Tracker, Feb 7, 2025 - Units.

2. Based on Dell internal analysis, October 2024 (Intel) and March 2025 (AMD). Applicable to PCs on Intel and AMD processors. Not all features available with all PCs. Additional purchase required for some features. Validated by Principled Technologies. A comparison of security features, April 2024.

3. 1 BIOS across Dell Pro Micro, Slim, Tower PCs with Intel® processors, and 1 BIOS across Dell Pro Micro, Slim, Tower PCs with AMD Ryzen® processors.

4. Source: Based on Dell Quality Intelligence (Qi) too - Dell Internal Analysis, January 2025.

5. Actual results may vary; testing results do not guarantee performance under test conditions. Dell Pro Micro (QCM1250), Dell Pro Micro Plus (QBM1250): Based on third-party testing conducted in Jan, 2025. Passed 14 MIL-STD-810H tests.

- Dell Pro Micro (QCM1255): Based on third-party testing conducted in Feb, 2025. Passed 13 MIL-STD-810H tests.
- Dell Pro Slim (QCS1250), Dell Pro Slim Plus (QBS1250): Based on third-party testing conducted in Dec, 2024. Passed 12 MIL-STD-810H tests.
- Dell Pro Slim (QCS1255): Based on third-party testing conducted in Feb, 2025. Passed 11 MIL-STD-810H tests.
- Dell Pro Tower (QCT1250), Dell Pro Tower Plus (QBT1250): Based on third-party testing conducted in Jan, 2025. Passed 14 MIL-STD-810H tests.
- Dell Pro Tower (QCT1255): Based on third-party testing conducted in Feb, 2025. Passed 13 MIL-STD-810H tests.
- Dell Pro 24 All-in-One Plus: Based on third-party testing conducted in Jan, 2025. Passed 12 MIL-STD-810H tests.
- Dell Pro 24 All-in-One 35W, Dell Pro 24 All-in-One 65W: Based on third-party testing conducted in Jan, 2025. Passed 14 MIL-STD-810H tests.

Dell Pro Micro

Dependable. Versatile.
Ultracompact.

Maximise business productivity in the smallest of spaces with the Dell Pro Micro and Dell Pro Micro Plus.



Dell Pro Micro

Choose from Intel® Core™ processors (14th Gen) up to i7, or AMD Ryzen™ 5 8500GE and 3 8300GE processors for everyday business efficiency. Or, upgrade to an AI PC to accelerate productivity with Intel® Core™ Ultra processors (Series 2) up to Ultra 7, or AMD Ryzen™ PRO 7 8700GE and 5 8600GE processors. Intel vPro® and AMD Ryzen™ PRO options are available for enhanced security and manageability.

High-speed productivity

These modular, ultracompact PCs are small yet powerful.

- Handle workloads efficiently with dual M.2 Gen 4 SSD and up to 64GB DDR5 RAM
- Comprehensive connectivity including USB-C, USB-A, DP and HDMI ports
- Integrated graphics support up to 4 displays in a multi-monitor setup¹
- Upgradable options² include DP, HDMI, Thunderbolt 4, 5GbE Optical Fibre (Peer-to-Peer)³ and WiFi 7

Enhanced thermals

Re-engineered with an enhanced thermal design and additional chassis venting to optimise airflow for cooler and quieter operation.

1. Dell Pro Micro (QCM1250), Dell Pro Micro Plus (QBM1250) - Support for (4) displays is enabled by daisy-chaining via DisplayPort 1.4a. Maximum display resolution and refresh rates are contingent on selected video port specifications and may be limited by each additional display connected by daisy-chain.

This is the expected display resolution when connecting 1 or more of your display(s) to:

One Native DisplayPort 1.4a – One display: up to 5120 x 3200 @60Hz resolution –or– Two displays via MST/daisy-chain: up to 3840 x 2160 @60Hz resolution –or– Three displays via MST/daisy-chain: up to 2560 x 1600 @60Hz resolution –or– Four displays via MST/daisy-chain: up to 2560 x 1440 @60Hz resolution; Two Native DisplayPort 1.4a – Two displays: up to 5120 x 3200 @60Hz –or– Three displays: one up to 5K @60Hz resolution, two via MST/daisy-chain: up to 3840 x 2160 @60Hz resolution –or– Four displays via MST/daisy-chain: up to 2560x1440 @60Hz resolution; Three Native DisplayPort 1.4a – Three displays: up to 5120 x 3200 @60Hz resolution –or– Four displays: two up to 5K resolution, two via MST/daisy-chain: up to 3840 x 2160 @60Hz resolution Dell Pro Micro (QCM1255) – Support for (4) displays is enabled by daisy-chaining via DisplayPort 1.4a. Maximum display resolution and refresh rates are contingent on selected video port specifications and may be limited by each additional display connected by daisy-chain. This is the expected display resolution when connecting 1 or more of your display(s) to: One Native DisplayPort 1.4a – One display: up to 5120 x 3200 @60Hz resolution –or– Two displays via MST/daisy-chain: up to 3840 x 2160 @60Hz resolution –or– Three displays via MST/daisy-chain: up to 2560 x 1600 @60Hz resolution –or– Four displays via MST/daisy-chain: up to 2560 x 1440 @60Hz resolution

Dell Pro Micro Plus

Designed for enhanced performance and advanced capabilities, this AI PC is powered by Intel® Core™ Ultra (Series 2) up to Ultra 9, complete with a dedicated NPU for AI-driven tasks.

Fits into any workspace

Keep your workspace clutter free with a range of optional mounts and stands. Dell Pro Micro features an optional Type-C module that allows power delivery to your PC (up to 100W) with just a single USB-C cable connected to a compatible Dell USB-C Hub monitor.

Intentional material choices

Dell Pro Micro PCs incorporate up to 50% recycled steel in the chassis⁴, up to 59% recycled plastic⁵ and up to 13% recycled ocean-bound plastic in the fan-housing⁵. They are shipped in packaging made with up to 100% recycled or renewable material⁶, with multipack packaging options to reduce transportation and packaging waste⁷.

Please visit Dell.com/Support and search for technical support resources for your Dell Pro Desktops, and Dell Displays and Peripherals (by product model number) for more details on setup and troubleshooting.

2. Options vary by model and may differ by country.

3. Supports up to 5Gbps connectivity via peer-to-peer transmission. Actual speed via network depends on equipment compatibility, requiring both transceiver and switch at the same maximum speed.

4. Percentage applies to total steel weight in the chassis. Includes OptiPlex Micro, OptiPlex Micro Plus, OptiPlex Tower, OptiPlex SFF, OptiPlex SFF Plus, Dell Pro Micro, Dell Pro Micro Plus, Dell Pro Tower, Dell Pro Slim and Dell Pro Slim Plus. Based on internal analysis, January 2025.

5. Based on internal analysis, January 2025. Recycled steel is in the chassis. Percentage is based on system plastic weight. Post-consumer recycled plastic: 45%, Closed-Loop ITE derived plastic: 14%. Recycled ocean-bound plastic applies to the fan-housing.

6. Contains 44.4% recycled content and 57.9% renewable materials. Renewable materials in the form of sustainably forested materials. Percentages may vary slightly by region [and form factor]. Excludes optional items added to order and included in the box.

7. Based on internal analysis, January 2025.

Dell Pro Slim

Performance in a compact design

Form meets function with Dell Pro Slim and Dell Pro Slim Plus. These professional-grade PCs bring performance and expandability in a space-saving design.



Dell Pro Slim

Accelerate productivity with AI PC options, powered by Intel® Core™ Ultra processors (Series 2) up to Ultra 7, or AMD Ryzen™ 7 8700G and 5 8600G processors. Additional configurations without built-in AI capabilities include Intel® Core™ processors (14th Gen) up to i7 and AMD Ryzen™ 5 8500G and 3 8300G series processors. Intel vPro® and AMD Ryzen™ PRO options are available for enhanced security and manageability.

High-speed performance

Tackle heavy workloads with up to 128GB DDR5 memory, 4 slots (Dell Pro Slim Plus) / up to 64GB DDR5, 2 slots (Dell Pro Slim). Performance comes easy with 3 M.2 SSD and hard drive bays (Dell Pro Slim Plus) / 1 M.2 SSD and a second M.2 SSD via Zoom expansion card (Dell Pro Slim).

Expand further

Easily upgrade your desktop's internal components with a tool-less chassis and three PCIe expansion slots. Upgrade options¹ include discrete graphics, USB-C, Thunderbolt 4, GbE Optical Fibre (Peer-to-Peer)² and WiFi 7.

1. Options vary by model and may differ by country.

2. Supports up to 5Gbps connectivity via peer-to-peer transmission. Actual speed via network depends on equipment compatibility, requiring both transceiver and switch at the same maximum speed.

3. Percentage applies to total steel weight in the chassis. Includes OptiPlex Micro, OptiPlex Micro Plus, OptiPlex Tower, OptiPlex SFF, OptiPlex SFF Plus, Dell Pro Micro, Dell Pro Micro Plus, Dell Pro Tower, Dell Pro Slim and Dell Pro Slim Plus. Based on internal analysis, January 2025.

Dell Pro Slim Plus

Designed for enhanced performance and advanced capabilities, this AI PC is powered by Intel® Core™ Ultra (Series 2) up to Ultra 9, complete with a dedicated NPU for AI-driven tasks.

Space-saving, purposeful design

Re-engineered with an enhanced thermal design that optimises airflow for quieter operation. Versatile, you can set it upright on a desk, or horizontally to support a monitor and save valuable desk space.

Intentional material choices

Built with 50% recycled steel in the chassis³ and up to 48% recycled plastic⁴, these PCs are shipped in packaging with up to 100% recycled or renewable plastic⁵. Multipack options are available to reduce transportation and packaging waste⁶.

4. Based on internal analysis January 2025. 50% recycled steel in the chassis, up to 43.3% post-consumer recycled plastic and up to 4.7% closed loop ITE derived plastic.

5. Contains up to 56.7% recycled content and up to 50.7% renewable materials. Renewable materials in the form of sustainably forested materials. Percentages may vary slightly by region [and form factor]. Excludes optional items added to order and included in the box.

6. Based on internal analysis, January 2025.

Dell Pro Tower

Meet the world's most compact tower PCs (> 15 L) with versatile expandability¹

With powerful processors, ample storage and advanced graphics capabilities, Dell Pro Tower and Dell Pro Tower Plus delivers outstanding performance and configurability to support your business needs.



Dell Pro Tower

Power productivity with AI PC options, powered by Intel® Core™ Ultra processors (Series 2) up to Ultra 7, or AMD Ryzen™ 7 8700G and 5 8600G processors. Additional configurations without built-in AI include Intel® Core™ processors (14th Gen) up to i7 and AMD Ryzen™ 5 8500G and 3 8300G series processors. Intel vPro® and AMD Ryzen™ PRO options are available for enhanced security and manageability.

Power to work beyond

- Conquer demanding projects with up to 128GB DDR5 memory (Dell Pro Tower Plus) / up to 64GB DDR5 (Dell Pro Tower)
- Performance comes easy with 3 M.2 SSD (Dell Pro Tower Plus) / 1 M.2 SSD and a second M.2 SSD via Zoom expansion card (Dell Pro Tower)
- Power through demanding graphics tasks with optional discrete graphics, such as AMD Radeon™ RX discrete graphics and Nvidia GeForce RTX™ (options vary by model)

Ultimate configurability

Easily expand functionalities with a no-tools chassis for quick access to internal components and up to 4 PCIe slots (Dell Pro Tower Plus) / up to 3 PCIe slots (Dell Pro Tower). Upgrade options² include USB-C, Thunderbolt 4, GbE Optical Fibre (Peer-to-Peer)³ and WiFi 7.

1. Dell Pro Tower and Tower Plus; under 15 liters. Based on Dell internal analysis of publicly available data, January 2025.

2. Options vary by model and may differ by country.

3. Supports up to 5 Gbps connectivity via peer-to-peer transmission. Actual speed via network depends on equipment compatibility, requiring both transceiver and switch at the same maximum speed.

4. Percentage applies to total steel weight in the chassis. Includes OptiPlex Micro, OptiPlex Micro Plus, OptiPlex Tower, OptiPlex SFF, OptiPlex SFF Plus, Dell Pro

Dell Pro Tower Plus

Designed for enhanced performance and advanced capabilities, this AI PC is powered by Intel® Core™ Ultra (Series 2) up to Ultra 9, complete with a dedicated NPU for AI-driven tasks.

Purposeful design

Re-engineered with an enhanced thermal design that optimises airflow for quieter operation. Keep your PC in peak condition with the optional Dell Pro Tower Dust Filter and reduce cable clutter with the optional Dell Pro Tower Cable Cover.

Intentional material choices

Built with 50% recycled steel in the chassis⁴ and up to 44% recycled plastic⁵, these PCs are shipped in packaging with up to 100% recycled or renewable plastic⁶. Multipack options are available to reduce transportation and packaging waste⁷.

Micro, Dell Pro Micro Plus, Dell Pro Tower, Dell Pro Slim and Dell Pro Slim Plus. Based on internal analysis, January 2025.

5. Based on internal analysis January 2025. 50% recycled steel in the chassis, up to 39% post-consumer recycled plastic and up to 5% closed loop ITE derived plastic.

6. Contains up to 53% recycled content and up to 53.7% renewable materials. Renewable materials in the form of sustainably forested materials. Percentages may vary slightly by region [and form factor]. Excludes optional items added to order and included in the box.

7. Based on internal analysis, January 2025.

Dell Pro 24 All-in-One

Work smarter with
this productivity and
collaboration hub

**This space-saving All-in-One with
built-in camera, mics and speakers is
available with AI options and a variety
of configurations.**



Dell Pro 24 All-in-One

Unlock next-level AI performance, powered by Intel® Core™ Ultra desktop processors (Series 2). Additional configurations without built-in AI include Intel® Core™ processors (14th Gen), available on the Dell Pro 24 All-in-One 35W. Featuring an FHD HDR camera, low blue light screen, integrated graphics and choice of fixed or height-adjustable stand. Intel vPro® options are available on all models for enhanced security and manageability.

High-speed productivity

Up to dual M.2 Gen 4 SSD and up to 64GB DDR5 RAM with 6400 MT/s speeds. Comprehensive connectivity including USB-C, USB-A, DisplayPort (DP) and HDMI ports. DP supports up to 5K resolution for stunning visual quality.

Easy fleet management

Streamline PC fleet management with one unified BIOS across Dell Pro All-in-One PCs.

Dell Pro 24 All-in-One Plus

Designed for enhanced performance and advanced capabilities, this AI PC is powered by Intel® Core™ Ultra (Series 2) up to Ultra 9, complete with a dedicated NPU to accelerate AI-driven tasks.

Featuring an optional upgrade to 5MP IR HDR camera, low blue light screen, optional discrete graphics and choice of fixed or height-adjustable stand.

Next-level video conferencing

Connect like you're there with an FHD High Dynamic Range (HDR) webcam. Look great, even in challenging lighting conditions, with HDR technology. On the Dell Pro 24 All-in-One Plus, upgrade to an impressive 5MP IR HDR webcam that supports Windows® Hello, Windows® Studio, and Microsoft® Human Presence Detection.

Intentional material choices

Built with up to 54% recycled plastic and 16% recycled glass¹, these PCs ship in packaging made with up to 100% recycled or renewable content.²

1. Based on internal analysis, January 2025. Percentage is based on system plastic weight. Dell Pro 24 All-in-One 35W: post-consumer recycled plastic: 41%; closed-Loop ITE derived plastic: 11%; recycled glass is in the panel. Dell Pro 24 All-in-One 65W: post-consumer recycled plastic: 43%; closed-Loop ITE derived plastic: 11%; recycled glass is in the panel. Dell Pro 24 All-in-One Plus: post-consumer recycled plastic: 41%; closed-Loop ITE derived plastic: 11%; recycled glass is in the panel.

2. Contains up to 96.3% recycled content and up to 41.5% renewable materials. Renewable materials in the form of sustainably forested materials. Percentages may vary slightly by region [and form factor]. Excludes optional items added to order and included in the box.

Reimagining desktops sustainably

Delivering innovative technology and solutions to collectively lower our environmental impact.



Built with sustainable materials

Designed with the environment in mind, we incorporate up to 50% recycled steel in the chassis of Dell Pro Micro, Slim and Tower PCs.¹ The Dell Pro All-in-One is crafted with 16% recycled glass.² Recycled plastic including post-consumer recycled plastic and closed loop ITE derived plastic³ are also included in the design of our Dell Pro desktops and All-in-Ones.



Built to last

Made with high-quality components, Dell Pro desktops drive top performance and value throughout its lifecycle. Dell makes it simple to access and replace parts to get the most life out of our products.



Packaging

Dell Pro desktops and All-in-Ones are shipped in packaging made with up to 100% recycled or renewable content.⁴ Select desktops are eligible for multipack shipping to help reduced transportation and packaging waste.⁵



Seamlessly modernise your tech

We can help you refresh to the latest technology while responsibly retiring your devices, regardless of brand, and addressing your sustainability goals.



Meets the latest environmental standards

Dell Pro desktops meet the latest environmental standards such as ENERGY STAR®, TCO certification, and EPEAT Gold registered with Climate+ designation⁶.



1. Percentage applies to total steel weight in the chassis. Includes OptiPlex Micro, OptiPlex Micro Plus, OptiPlex Tower, OptiPlex SFF, OptiPlex SFF Plus, Dell Pro Micro, Dell Pro Micro Plus, Dell Pro Tower, Dell Pro Slim and Dell Pro Slim Plus. Based on internal analysis, January 2025.

2. Based on internal analysis, January 2025. Percentage is based on system plastic weight. Recycled glass is in the panel.

3. Dell Pro Micro PCs: Claim Details: Refer to Page No 11 (Dell Pro Micro) #5
Dell Pro Slim PCs: Claim Details: Refer to Page No 12 (Dell Pro Slim) #4
Dell Pro Tower PCs: Claim Details: Refer to Page No 13 (Dell Pro Tower) #5
Dell Pro All-in-Ones: Claim Details: Refer to Page No 14 (Dell Pro 24 All-in-One) #1

4. Dell Pro Micro PCs: Claim Details: Refer to Page No 11 (Dell Pro Micro) #6
Dell Pro Slim PCs: Claim Details: Refer to Page No 12 (Dell Pro Slim) #5
Dell Pro Tower PCs: Claim Details: Refer to Page No 13 (Dell Pro Tower) #6
Dell Pro All-in-Ones: Claim Details: Refer to Page No 14 (Dell Pro 24 All-in-One) #2

5. Based on internal analysis, January 2025.

6. Dell Pro Micro, Slim, Tower PCs: EPEAT Gold Registration with Climate+ and TCO certification applies to Dell Micro Plus, Dell Pro Slim AMD config, Dell Pro Slim Plus, Dell Pro Tower AMD config and Dell Pro Tower Plus. Based on internal analysis, January 2025. EPEAT registered where applicable. EPEAT registration varies by country. See www.epeat.net for registration status by country. Dell Pro All-in-Ones: EPEAT Gold Registration with Climate+ and TCO certification apply to the Dell Pro 24 All-in-One 35 watt and Dell Pro 24 All-in-One Plus. Dell Pro 24 All-in-One 65 watt is EPEAT Silver registered with Climate+. Based on internal analysis, February 2025. EPEAT registered where applicable. EPEAT registration varies by country. See www.epeat.net for registration status by country.

Stay ahead with the power of AI

Run the right workload on the right engine and the right time

Work smarter, not harder with Dell AI PCs. Built with a cutting-edge three-tier processing system, combining the power of CPU, GPU, and dedicated NPU. Whether you're tackling big projects or speeding through your daily routine, Dell AI PCs empower you with AI-driven tools that make every task faster, smoother, and effortlessly productivity

CPU
Ensures seamless execution of system tasks and operations.

GPU
Handles quality graphics rendering and accelerates computing tasks.

NPU
Dedicated AI engine runs AI workloads consuming less power, resulting in longer battery life.

Take everyday to the next level with AI-powered tools



Elevate Productivity

Solve problems faster and drive business impact with Windows 11 Pro Copilot+ PCs.¹ Devices come with a turbocharged NPU for powerful performance and unique AI experiences that save time and accelerate innovation.



Stay Secure

McAfee Deepfake Detector sends real-time alerts to identify misleading AI content, protecting your brand and maintaining trust while saving up to 48% less power.⁴



Enhance Collaboration

Collaborate more effectively without the distractions of lagging devices or power drains. Dell AI PCs are 22% cooler and are up to 3% more energy efficient for select enhanced collaboration workloads when using Zoom.²



Bring AI to your PCs

Enhance Collaboration

For organisations looking to accelerate deployment of AI applications across their workforce, Dell delivers the industry's most comprehensive AI toolkit leveraging NPU technology.⁵ Dell Pro AI Studio brings AI directly to your device, perfect for keeping things running smoothly without the hefty price tag.



Spark Creativity

Create stunning visuals with CyberLink's Promeo AI Magic Designer that uses generative AI to create fully editable custom designs and text 1.9x faster, even offline.³

1. Copilot+ PC experiences require free updates. Timing varies by device and region. See Copilot+ PCs (<https://www.microsoft.com/en-in/windows?r=1#faq>)

2. Based on internal analysis and testing, February 2025. Dell AI PCs running on devices with Intel® Core™ Ultra 200 K/U/H/HX/S series processors was compared to previous-generation Intel® Core™ Ultra processors. Results may vary.

3. As measured by Cyberlink's Promeo AI Magic Designer feature. Results may vary.

4. Based on internal analysis and testing, November 2024. McAfee's Deepfake Detector running on devices with Intel® Core™ Ultra 200V series processors was compared to previous-generation Intel® Core™ Ultra processors. Results may vary.

5. Based on Dell internal testing against publicly available comprehensive information, November 2024

Simplify IT

Our most secure¹ and simple-to-manage offerings make IT management a breeze.

Security

Improve fleet-wide security with multiple layers of defense

- Be secure from first boot with rigorous supply chain controls.
- Protect end-user identity from malware that looks to steal credentials.
- Maintain BIOS integrity with deep, firmware-level visibility.
- Enrich OS-level data with PC telemetry to speed detection, response and remediation.
- Layer on advanced threat protection from our ecosystem of best-of-breed software partners.



Our Most Secure Commercial PCs¹



According to Principled Technologies, no PC manufacturer offers the BIOS-level visibility Dell does.

Manageability

Manage your fleet of PCs – reliably and easily

Help secure and optimise your endpoints and deliver end-user productivity with [Dell Manageability Solutions](#)

With [Dell Management Portal](#), you can manage Dell PCs, over the cloud, in conjunction with Microsoft Intune.

Update and secure your fleet of Dell PCs, with one application – **Dell Client Device Manager**.³

Shrink the IT-security gap with an integrated, AI-enabled solution

[Explore](#) hardware-assisted security with Dell, Intel & CrowdStrike.



Dell Trusted Update Experience

makes it simple to update endpoints with the latest BIOS and driver versions.

Dell is the only Top-5 PC vendor that:

Publishes² a device drivers and downloads

a release schedule: IT Admins can deploy fleet-wide device updates on a predictable timeline.

Dell has the industry's first Partner Portal accessible in Microsoft Intune, with fleetwide BIOS password access capability and Enterprise application access and publication capabilities.

Enterprise application with modular update and security deployment capabilities, within the Dell Partner Portal, accessible via Microsoft Intune.

1. Based on Dell internal analysis, October 2024 (Intel) and March 2025 (AMD). Applicable to PCs on Intel and AMD processors. Not all features available with all PCs. Additional purchase required for some features. Intel-based PCs validated by Principled Technologies. A comparison of security features, April 2024.

2. Dell publishes a device drivers and downloads release schedule. Source: Based on internal analysis, May 2023. When comparing publicly available device drivers and downloads release schedules published by the Top 5 PC vendors, as of May 2023.

3. Dell Client Device Manager application availability planned for March 2025.

Benefits

Stronger distinction between product lines and tiers offers a straightforward and seamless journey for those choosing and purchasing Dell devices.

This portfolio redesign delivers several experience benefits, including:

- Simpler and clearer product differentiation
- Ease of identifying the right products to solve challenges
- Enhanced and simplified shopping



Why Insight for Dell?

14,000+

**Insight teammates
worldwide**

64

Dell certifications

26

countries served

The end-to-end PC portfolio for the AI era. Simplifying the complex. As AI capabilities and high-performance mobility become necessary components of the modern device fleet, Insight and Dell Technologies continue to deliver. As part of its long-standing commitment to excellent customer experiences, Dell has unveiled a new approach to its leading-edge device portfolio. Introducing the simplest end-to-end PC portfolio for the AI era.

Speak our Insight's Dell team today about your [next range of Dell Pro PCs](#)

