

# Empower Your Organisation With Copilot+ PCs From Insight and Microsoft Surface



## Why Insight for Microsoft Surface?

Our 30+ year partnership and substantial investment demonstrate our commitment to Microsoft® products, so we can maximise their value for your business.

### 2024 awards

- Microsoft Americas Surface Partner of the Year, U.S.
- Microsoft Surface Reseller Partner of the Year, North America
- Microsoft Americas AI & Copilot Innovation Partner of the Year, Canada
- Microsoft Surface Solutions Partner Excellence Award, Canada

### 2023 awards

- Microsoft Solution Assessments Partner of the Year
- Microsoft U.S. Partner of the Year - Azure Cloud Native App Development
- EMEA Surface Reseller of the Year - Consumer Goods

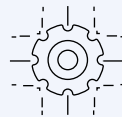
### Scale

- Insight sources Microsoft Surface® to 49 countries, in 14 currencies and 16 languages
- 30,000+ devices are moved through Insight's distribution centres every day
- 7 ISO-certified Warehouses and Integration Facilities (US/UK/GER)



#### Readiness

Discover best practices to ensure optimal outcomes.



#### Procure

Get the right Surface eCommerce devices efficiently and effectively with Insight's e-procurement and procurement strategies.



#### Prepare

Prepare to deploy Surface with a custom look and feel through Insight's Integration Lab offerings.



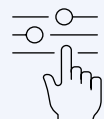
#### Deploy

Quickly integrate Surface into your small business through automated deployment features.



#### Maintain

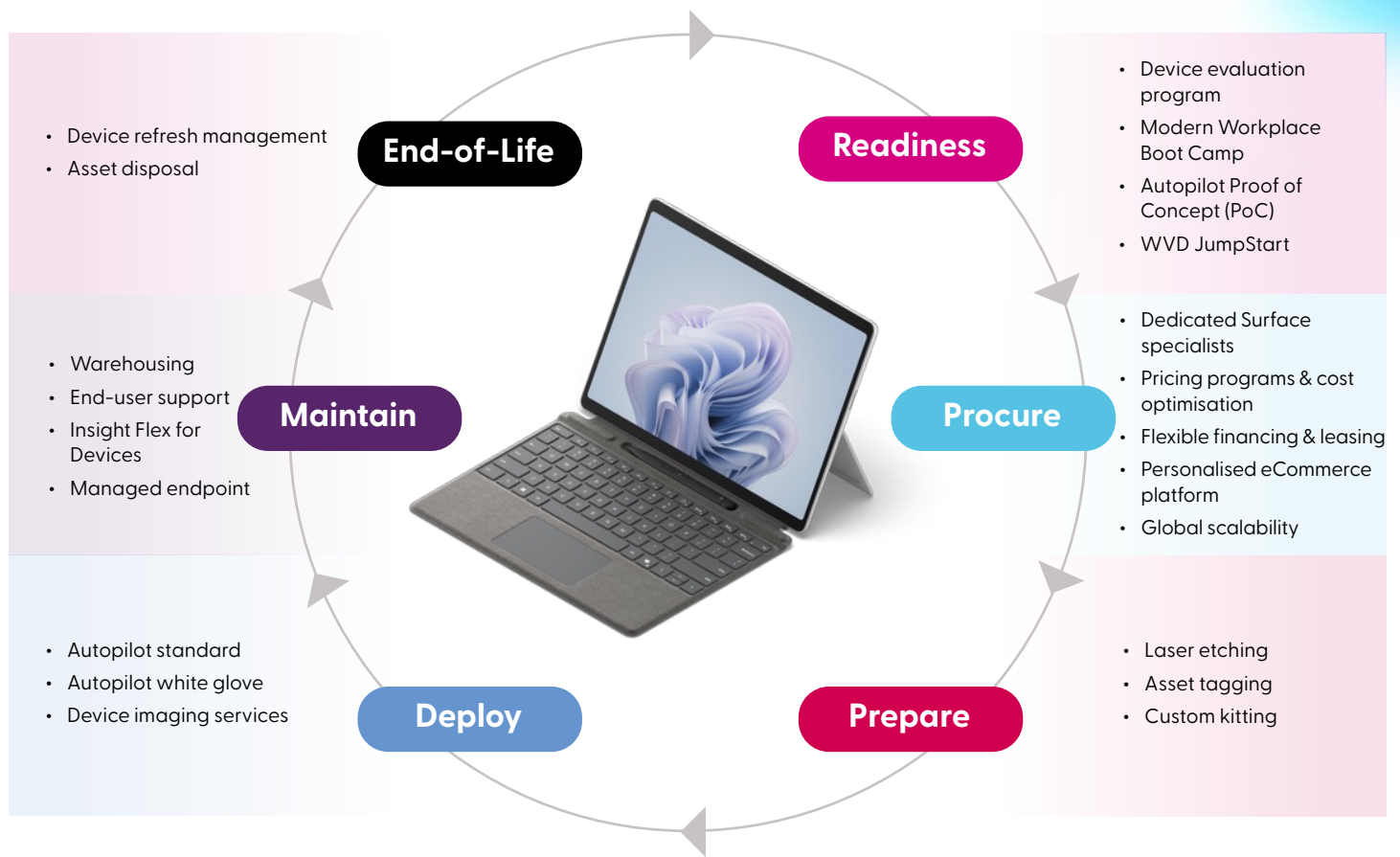
Manage your Surface inventory through our warehouses and obtain IT support from our Gartner-recognised workplace services.



#### End of life

Securely and conveniently dispose of end-of-life devices through our lifecycle services.

# From readiness to end of life, Insight offers full lifecycle services.



## Dare to Compare Experience

**Test the benefits of moving to Microsoft Surface Copilot+ PCs.**

### 1. Surface device evaluation

Select a Microsoft Surface device to demo in your environment, so you can test and evaluate the device in comparison to your current device portfolio.

### 2. Dare to Compare Workshop Series

Session 1: Next-Gen AI (Copilot+) PC Workshop – Generalist Conversation

Session 2: Secure & Deployment Workshop – Technical Conversation

Session 3: 30-Day Follow-Up – Review Experience, Make A Plan

### 3. Access to exclusive pricing

As a Dare to Compare participant, you'll gain access to our exclusive pricing for evaluating and selecting Surface devices for your organisation. Free Windows® Autopilot device registration is included when you buy your devices from Insight.

# Surface device evaluation: Choose the Surface device that's right for you.

## Demo a Surface Laptop.



### Surface Laptop 6 for Business

- Intel® AI Boost NPU
- Antireflective display technology
- Optional integrated smart card reader
- Intel Core™ Ultra 5 or 7 processor
- 13.5-inch and 15-inch
- Up to 19 hours of battery life



### Surface Laptop for Business (Snapdragon)

- Qualcomm® Hexagon™ NPU with 45 TOPS
- MicroSDXC Express card reader
- Snapdragon X Elite or Plus processor
- 13.8-inch and 15-inch
- Up to 22 hours of battery life



### Surface Laptop for Business (Intel)

- Intel AI Boost NPU with 40 or 48 TOPS
- Antireflective display technology
- Optional integrated smart card reader and MicroSDXC Express card reader
- Intel Core Ultra processor (Series 2)
- 13.8-inch and 15-inch
- Up to 22 hours of battery life

## Demo a Surface Pro.



### Surface Pro 10 for Business

- Intel AI Boost NPU
- Antireflective display technology
- Optional 5G
- Intel Core Ultra 5 or 7 processor
- Up to 19 hours of battery life



### Surface Pro for Business (Snapdragon)

- Qualcomm Hexagon NPU with 45 TOPS
- Optional OLED display
- Optional 5G
- Snapdragon X Elite or Plus processor
- Up to 14 hours of battery life



### Surface Pro for Business (Intel)

- Intel AI Boost NPU with 40 or 48 TOPS
- Antireflective display technology and optional OLED display
- Intel Core Ultra processor (Series 2)
- Up to 14 hours of battery life

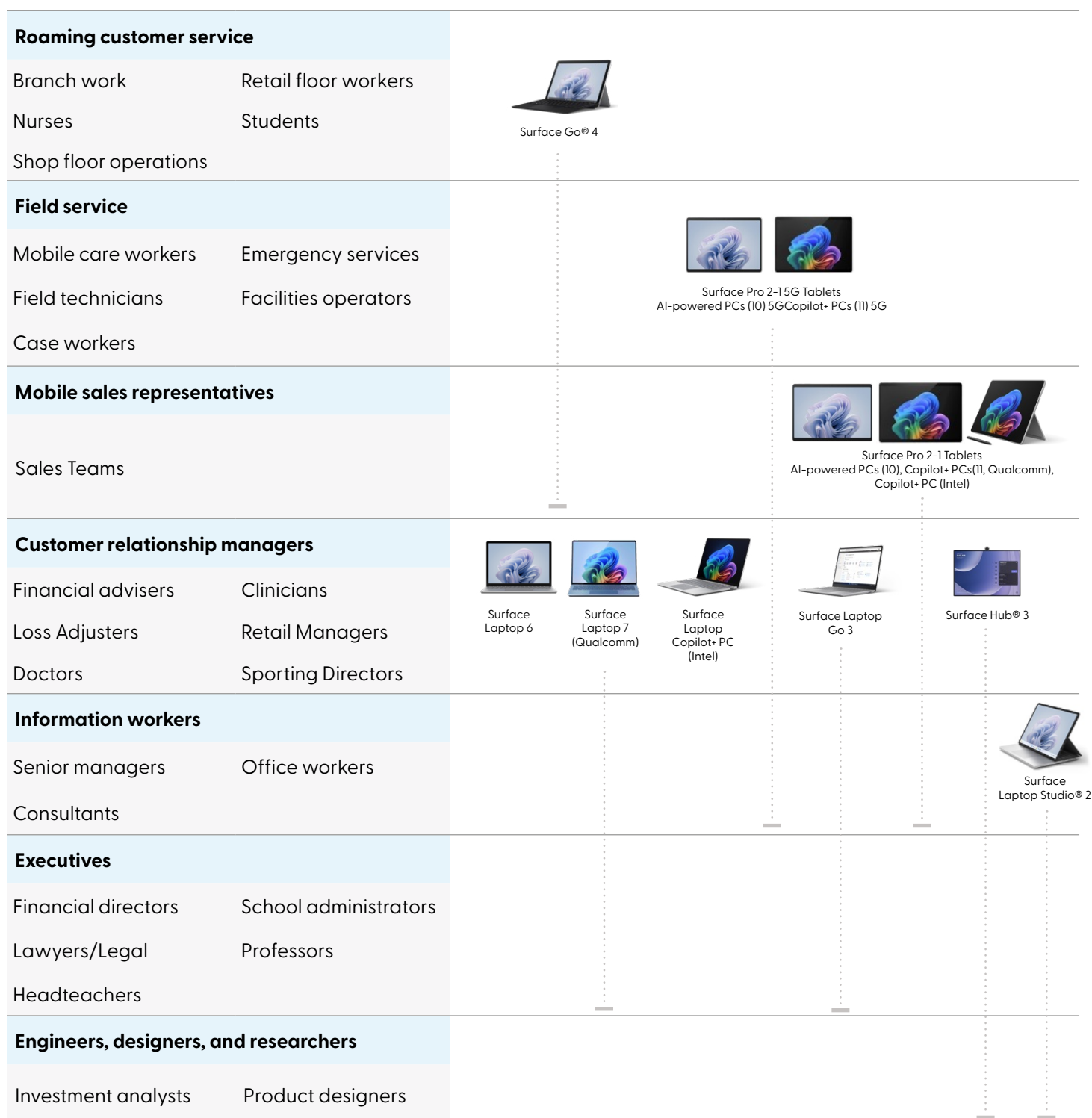
# Surface devices for every role.

Our workplace has evolved to connect intelligently, enabling us to do our best work from anywhere with modern devices that naturally adapt to our needs. In this environment, technology doesn't distract or get in the way. Instead, it empowers people, data, and systems to connect, collaborate, and communicate in new ways.

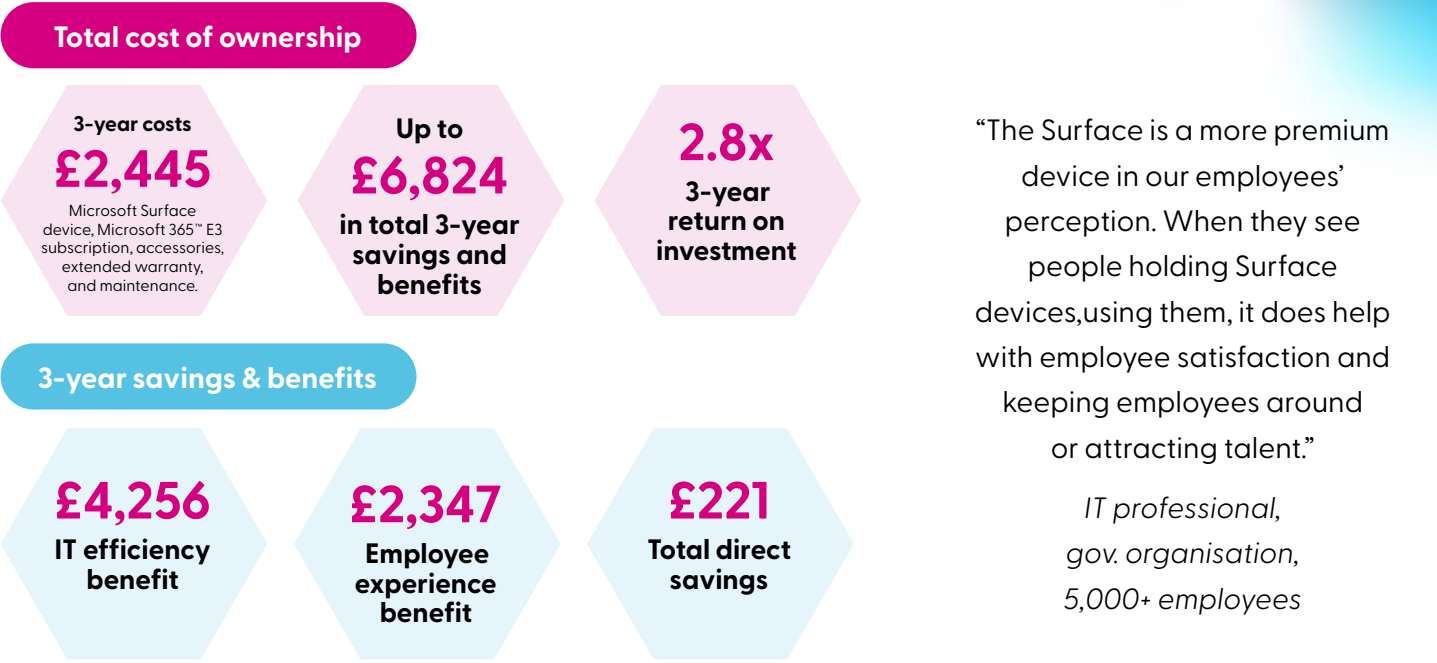
We recognise the importance of enabling a hybrid workforce and believe that Microsoft Surface can assist

in making this a reality. Surface now has nine product lines, intentionally differentiated yet connected through a core set of experiences. When you buy Surface – any Surface – you're investing in a device intentionally designed for the future of work.

**Microsoft continues to innovate and add additional products as new needs emerge in the workplace, exemplified by the latest release of the Surface Pro 11.**



# What does the Surface total cost of ownership look like?



Overall, IDC’s research shows Surface’s benefits are worth almost three times the investment costs over three years:

Costs		Savings	
£1,023	<b>Surface device</b> Surface laptop or 2-in-1	£86	<b>Increased residual value</b> 31% higher than other PC devices
£978	<b>Microsoft 365 E3 subscription</b> £27 per user per month. License cost doesn't change across device manufacturers.	£43	<b>Reduced support</b> 23% lower third-party support & security costs
£443	<b>Accessories, extended warranty &amp; maintenance</b>	£90	<b>Accessories savings</b> Fewer hybrid meeting accessories (camera, lights, headset)
£2444	<b>Total cost per Surface device</b> (incl. accessories) over 3 years	£219	<b>Total savings per Surface device</b> (incl. accessories) over 3 years

IT efficiency		Employee experience	
£2,836	<b>Device consolidation</b> 44% of organisations consolidated 2.3 devices on avg.	£974	<b>Productivity gains from increased mobility</b> +11.6 hours employee productivity time per year
£668	<b>Reduced helpdesk support</b> 40% fewer helpdesk incidents	£467	<b>Reduced employee time lost to helpdesk</b> +5.5 hours employee productivity time per year
£611	<b>Reduced ongoing maintenance</b> 40% reduced IT staff time spend on maintenance	£652	<b>Meeting time saved</b> +7.7 hours employee productivity time per year
£95	<b>Reduced time for security incident response</b> 34% fewer security incidents	£67	<b>Reduced employee time lost to security incidents</b> 30% reduced time waiting for incident resolution
£31	<b>Reduced IT deployment costs</b> 21% reduced IT staff time spent on deployment	£45	<b>Faster Surface deployment to employees</b> 27% reduced employee time waiting for device
£14	<b>Reduced IT staff time for ongoing security</b> 3% reduced IT staff time spent on ongoing security	£79	<b>Higher employee retention</b> 4% increased retention of Surface-utilising employees
-£1	<b>Higher IT training costs</b> 6% increased IT staff time due to Surface training	£61	<b>Faster bootup time</b> 32% faster boot time, 21% fewer reboots with Surface
£4,254	<b>Total IT Benefit per Surface device</b> (over 3 years)	£2345	<b>Total employee benefit per Surface device</b> (over 3 years)



# Exclusive Insight device & solution offerings

Insight is committed to empowering our clients to make informed decisions about their device investments. Our variety of exclusive offers allow clients to test and evaluate devices tailored to their unique needs. We aim to provide clients the resources they need to improve their productivity, unlock new growth opportunities, and achieve their business goals.

## Windows 11 & Next-Gen AI (Copilot+ PC) Readiness Workshop Series

### Session 1: Next-Gen AI PC (45 minutes)

Explore the value of AI and Copilot+ PCs, the current AI device roadmap, the cost of doing nothing in the face of Windows 10's End of Support (EOS) in October 2025, and the benefits of moving to Windows 11 Pro devices right away.

- Depth of technology discussion: 100
- Suggested attendees: Executive leaders, IT & security operations, LOB application leaders
- Products & technology discussed: X86 Processors: Intel, AMD, ARM processors: Qualcomm, Microsoft Surface

### Session 2: Secure Deployment & Fleet Review (45 minutes)

Review modern deployment through zero-touch provisioning, Windows 11 readiness reporting tools from Microsoft, AI and ARM application compatibility, and provisioning/imaging testing.

Optional 60 minutes: Requested for a deeper dive through Windows Autopilot and/or ISV ARM application compatibility

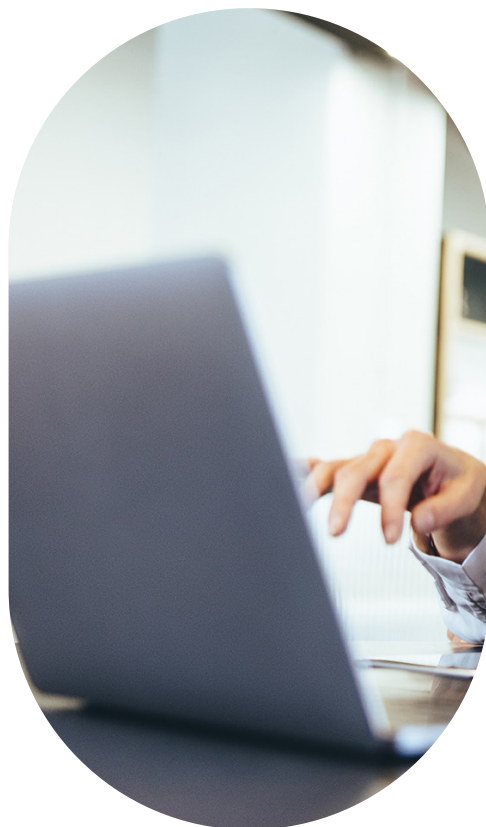
- Depth of technology discussion: 100–300
- Suggested attendees: IT & security operations, LOB application leaders
- Products & technology discussed: Microsoft Intune®, Windows Autopilot, ARM applications

### Session 3 (Optional):

#### 30-Day Follow-Up (30 minutes)

Review device reporting for Windows 11 readiness; best paths to resolution for any outstanding AI and ARM issues; your experience survey; and introduce you to the Silicon, OEM, and ISV teams.

- Depth of technology discussion: 100–300
- Suggested attendees: Executive leaders, IT & security operations, LOB application leaders
- Products & technology discussed: ARM applications, Microsoft Surface

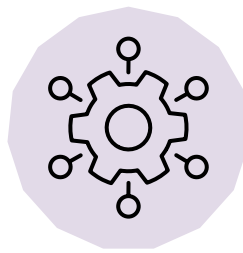


## Additional no-cost offers



### Insight Flex for Devices Consultation

Join an Insight Flex expert to discuss how we can provide a complete solution that solves real-world problems for device lifecycle management. Learn about our preconfigured FLEX solutions or a completely customised solution across acquisition, services, and management to disposal and renewal at the end of the device term.



### Simplified management

Learn about Microsoft identity, management security, and compliance tools from product technical solutions specialists. Insight will provide guidance and recommendation on future desired outcomes to meet your goals.

## Insight solution offerings

### Microsoft 365 Copilot Workshop

Delivered by our team of Microsoft experts, this eight-hour workshop will provide you with everything you need to understand how Microsoft 365 Copilot will impact your organisation and what you need to do to ensure success.

comprehensive threat detection, investigation, and response capabilities across IT environments 24/7/365. It includes security event monitoring of an organisation's users, identities, email, applications, endpoints, data, and cloud and infrastructure for any malicious activity.

### Insight Managed Microsoft XDR

Insight's Managed Microsoft XDR service is a cybersecurity solution designed to provide



# Designed to work better together

## Surface + Windows 11 + Microsoft 365



### Creating the modern workforce

Older devices may struggle to support new opportunities, including new AI experiences. Microsoft designed and built Surface to run Windows 11 and Microsoft 365, so employees already using these Microsoft technologies have seamless access to the tools, apps, and new AI experiences – including Microsoft Copilot and Windows Studio Effects – that empower streamlined work and innovation.

### Made for Microsoft 365 + Windows 11

Surface's hardware is built to deliver optimal experiences for Windows and Microsoft 365.

### Productivity realised with Surface + Copilot

Surface lets you engage with Copilot in ways that are natural and intuitive through keyboards with the Copilot key,<sup>1</sup> pen, touch, and voice.

### What sets a Copilot+ PC<sup>2</sup> apart?

#### Exceptional performance:

Unlock power and performance with the latest Intel® Core™ Ultra processors (Series 2).

With NPUs delivering 40 to 48 TOPS of on-device AI performance<sup>3</sup> and all-day battery life,<sup>4</sup> Microsoft Surface Pro for Business and Microsoft Surface Laptop for Business ensure power and productivity are never compromised.

#### Innovate at the edge:

Invest in cutting-edge AI capabilities and push the boundaries of what's possible.

Copilot+ PCs come with a turbocharged NPU for powerful performance and unique AI experiences that save time and accelerate innovation.

#### Built for security, designed for trust:

Held to the same high standard as all Microsoft services and software.

With Windows 11 Pro, Microsoft Surface Pro for Business and Microsoft Surface Laptop for Business deliver uncompromising chip-to-cloud security, put ultimate control in your hands, and provide peace of mind wherever and however work gets done.

#### Productivity realised with Microsoft Copilot:

Uncover new opportunities, create compelling content, and solve problems anywhere with unique AI experiences.

Experience the productivity of Copilot at your fingertips with the Copilot key, plus inclusive features delivered through effortless touch gestures, voice commands, and Surface Slim Pen<sup>5</sup> inking.

**When decision-makers choose Surface + Microsoft 365, they're extending what's possible for their people and business. Contact us for special pricing & discounts.**

1. Copilot key feature availability varies by market, see [aka.ms/keysupport](https://aka.ms/keysupport)

2. On some devices, Copilot+ PC experiences require free updates available into 2025. Timing varies by device and region - [aka.ms/copilotpluspcs](https://aka.ms/copilotpluspcs)

3. Disclaimer: Intel AI Boost with 48 TOPS on Intel Core Ultra 7 processor 266V and Intel Core Ultra 7 processor 268V.

4. Based on video playback test. Battery life varies significantly based on device configuration, usage, network and feature configuration, signal strength, settings, and other factors. See [aka.ms/SurfaceBatteryPerformance](https://aka.ms/SurfaceBatteryPerformance) for details.

5. Sold separately. Software license required for some features.



# Insight Flex for Devices – A new approach to DaaS

## Benefits across the business



### IT Operations & Security

- Reduce costs
- Improve employee experience
- Get the right data to make informed decisions
- Improve device security



### End Users

- Work more seamlessly
- Get devices when they need them
- Have the right devices for their needs

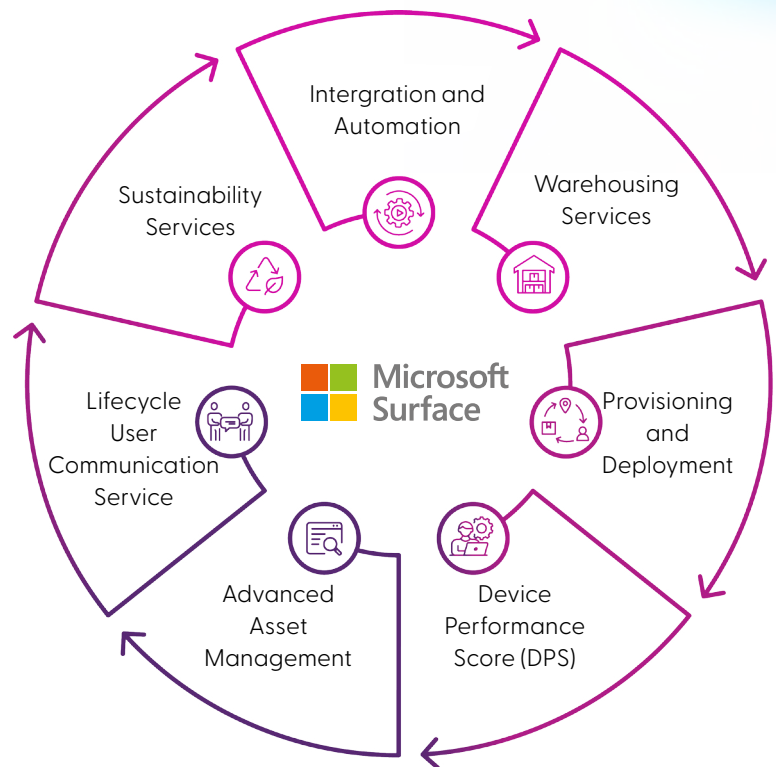


### Procurement & Finance

- Reduce costs
- Understand device fleet TCO
- Know where assets are located
- Achieve ROI

**Discover your organisation's potential ROI.**

Flex for Devices provides better service for less money. Find out your cost savings using our [value calculator](#)

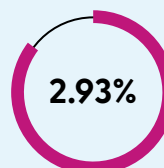


### Current spend vs. Insight Flex for Devices

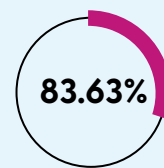
Estimated value projection

**£ 1,734,462**  
ROI

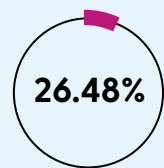
**26.48%**  
ROI percentage



**£136,002**  
Device spend savings



**£1,598,446**  
Device IT lifecycle spend savings

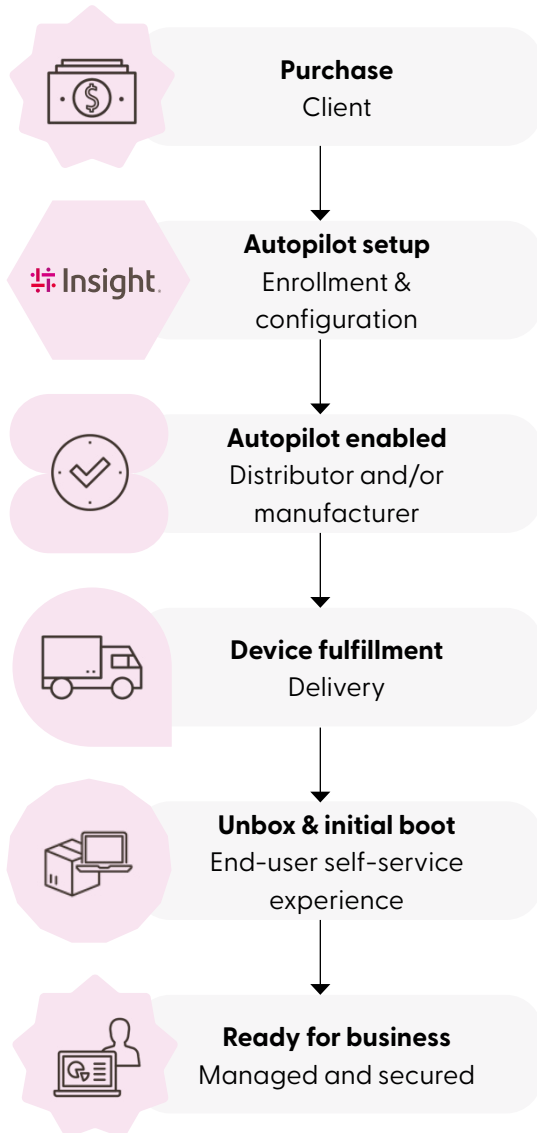


**£14**  
Per device per month savings

# Insight's Autopilot value-added post-sales services

To help organisations empower hybrid work in their Microsoft Surface® device ecosystem, Insight also offers optional, no-cost value-added post-sales services. These offerings have been developed to allow clients to get their hybrid workforce up to speed faster and more effectively, while reducing the burden on client IT teams.

## Autopilot standard process



## No-cost Windows Autopilot standard deployment

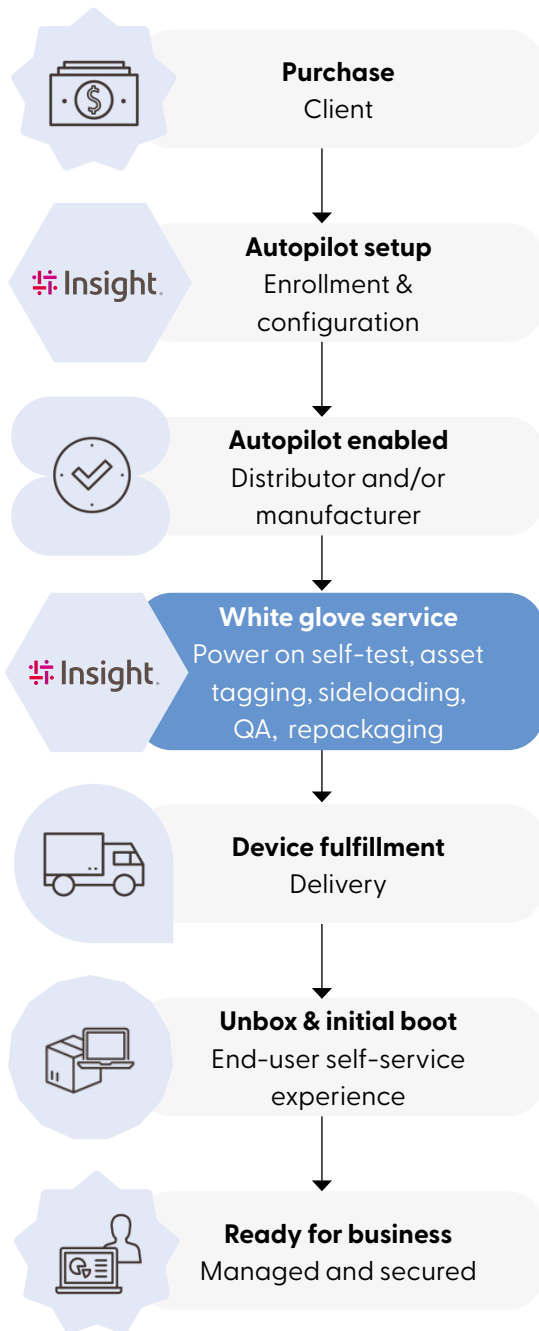
Traditionally, IT pros spend a lot of time building and customising images that will later be deployed to devices. Windows® Autopilot introduces a new approach that allows users to easily enable and benefit from a hybrid work environment.

From the user's perspective, it only takes a few simple operations to make their device ready to use.

From the IT pro's perspective, the only interaction required from the end user is to connect to a network and verify their credentials. Everything beyond that is automated.



## Autopilot white glove process



## Windows Autopilot white glove deployment

Building on the benefits you receive from the Autopilot standard offering, Insight will:

Perform a power on self-test and visual inspection.

Complete app sideloading, application of user settings and policies, and Windows edition reconciliation.

Capture the serial and asset tag.

Conduct a quality assurance check, repackage, and ship to the end user with the fully completed Autopilot deployment



# **Empower Your Organisation With Copilot+ PCs From Insight and Microsoft Surface**

